



20  
26

# SCHOLARSHIP GUIDE

---

SOUTH GIPPSLAND  
& BASS COAST



Country  
Universities  
Centre  
BASS COAST



**SGBCLEN**  
Local Learning  
& Employment Network  
SOUTH GIPPSLAND & BASS COAST

# Table of contents

1	➡	Scholarships
2	➡	VTAC Scholarships
4	➡	Local Scholarships
6	➡	Regional, Rural or Remote Scholarships
7	➡	Centrelink Scholarships and Assistance
8	➡	Agriculture and Environment Scholarships
9	➡	Building and Construction Scholarships
9	➡	Business and Management Scholarships
10	➡	Creative Arts Scholarships
10	➡	Health, Nursing and Medicine Scholarships
13	➡	Languages and Humanities Scholarships
13	➡	Law Scholarships
14	➡	Science, Mathematics and Engineering Scholarships
16	➡	Education Scholarships
16	➡	Other Scholarships
19	➡	Vision Australia Bursary
19	➡	Scholarship Search Engines
20	➡	University & TAFE Scholarship Listings

This resource has been developed by the Country Universities Centre Bass Coast and the South Gippsland Bass Coast Local Learning and Employment Network. As valued partners, we are working closely on multi-sectoral partnerships that fosters collaboration between industry, schools, community and universities and TAFEs.

# Scholarships

We know that many students aspire to go to university to gain a degree or go to TAFE and study towards a diploma, but for many students the cost makes this unattainable. Higher education isn't free, it costs \$20,000–\$45,000 to complete a Bachelor degree and if you have to live on campus, the fees can be more than \$20,000 a year. And that's before you buy any textbooks, study materials, or IT equipment!

Scholarships exist to increase opportunities for someone just like you to access higher education. Being awarded a scholarship could mean the difference between accepting or turning down a place at university.

There are scholarships specifically tailored to the needs of regional students. Even though you might not think you're eligible, no matter what your situation or background, there is a scholarship you can apply for.

Examples of types of scholarships include:

- Access for regional and rural students
- Residential scholarships
- Travel and study grants
- Placement grants
- Areas of study, such as agriculture, the health professions and teaching
- Scholarships for people from diverse backgrounds.

Your chances of success depend on finding the right scholarship to suit your circumstances and needs.

There are a number of key steps to follow to enhance your chances of success:

- **Commit** – Decide that you want to apply for a scholarship
- **Assess** – Find scholarships that you are eligible for
- **Research** – Look far and wide
- **Knowledge** – Know your audience/know what they are looking for
- **Awareness** – Pay attention to your competition
- **Quality** – Proofread everything!
- **Determination** – Perseverance pays off! If at first you don't succeed, apply again (and again...)



## When Should You Apply for Scholarships?

Timing is Key! Each scholarship has different opening and closing dates, so it's essential to keep track of deadlines. Give yourself plenty of time to prepare your application and gather any required documents.

# VTAC Scholarships

## VTAC Scholarship Applications

Many Victorian universities use the Victorian Tertiary Admissions Centre (VTAC) to process scholarship applications, especially for first-time university students. Through VTAC, you can apply for scholarships based on:

- Financial need
- Academic achievement
- Being the first in your family to attend university
- Indigenous Australian background
- Refugee or asylum seeker status
- Relocation for study
- Living on campus
- Experience in out-of-home care
- Disability or medical condition affecting education
- Difficult life circumstances impacting study
- Community service and leadership
- Commitment to regional & rural health (for Monash Gippsland students)

## How to apply via VTAC for Study in 2026

- 1 Go to the VTAC website - [www.vtac.edu.au](http://www.vtac.edu.au)
- 2 Complete your application and provide all additional information and documentation. Applications open 28 July 2025 and close at 5pm on 10 October 2025
- 3 Create an account or log in to your existing account using your VTAC ID & PIN
- 4 Select 'Scholarship Application' in your VTAC user account (all applications are online)
- 5 Enter your personal details and provide additional information if required.



Tip: Start your application early to give yourself the best chance of success!





Not all institutions use the VTAC platform to process scholarship applications. Below is a table showing the institutions that use VTAC and the eligibility requirements. For other institutions, refer to the relevant links at the end of this guide.

Charles Sturt University	Accepts Australian citizens and holders of an Australian permanent residency visa. Will <u>not</u> accept New Zealand citizens and holders of an Australian temporary/student residency visa.
Deakin University	Accepts Australian citizens, New Zealand citizens and holders of an Australian permanent residency or humanitarian visa. Will <u>not</u> accept holders of an Australian temporary/student residency visa.
La Trobe University	Accepts Australian citizens, New Zealand citizens and holders of an Australian permanent residency visa. Will <u>not</u> accept holders of an Australian temporary/student residency visa.
RMIT University	Accepts Australian citizens, New Zealand citizens and holders of an Australian permanent residency visa. Will <u>not</u> accept holders of an Australian temporary/student residency visa.
Swinburne University of Technology	Accepts Australian citizens and holders of an Australian permanent residency visa or humanitarian visa. Will <u>not</u> accept New Zealand citizens and holders of an Australian temporary/student residency visa.
Victoria University	Accepts Australian citizens, New Zealand citizens and holders of an Australian permanent residency visa or humanitarian visa or temporary visa. Will <u>not</u> accept holders of an Australian student residency visa.

# Local Scholarships

## **Mirboo North & District Community Foundation**



The Education Support Awards focuses on assisting students going into tertiary education. It started back in 2013 with a focus on financial support for students. Since 2018, the program has also included opportunities for mentoring and leadership development through a collaboration with You thrive Victoria.

### Eligibility:

- Enrolled in or intending to enrol in their first year of a recognised course of study in the following year.
- Residents of, or people with, a strong demonstrable connection to the Mirboo North District (including Allambee, Berry's Creek, Boolarra, Budgerree, Childers, Darlimurla, Delburn, Dumbalk, Hallston, Mardan, Mirboo North, Mirboo, Narracan, Thorpdale and Yinnar and the many rural communities in between).
- Australian citizens, permanent residents and applicable visa holders

Keep an eye on websites for application dates.



## **Bendigo Bank – Community Bank Scholarships**



These scholarships are for students who reside in, or have attended a secondary school in, the local area of the relevant Community Bank branch offering a scholarship.

Some Community Bank branch scholarships may support studies at university or TAFE, whilst others may support studies at university only or TAFE only. It is suggested to contact the participating Community Bank branch for a copy of the fact sheet to see what's on offer.

You must be an Australian citizen or permanent resident.

Bendigo Community Bank Branches that have previously offered scholarships:

- Toora & Foster Branch – The Llew Vale Scholarship
- Mirboo North Branch
- Grantville & District Branch
- Inverloch & District Branch
- San Remo District.

Keep an eye on their social media or website for application dates.



## **Greenhills Community Benevolent Society – Education Scholarships**

Scholarships for Residents of Bena, Loch, Nyora, Poowong and Surrounding Areas. Greenhills Community Benevolent Society Incorporated aims to encourage local residents to attain tertiary qualifications.

Eligibility:

- Available to students attending an Australian university or tertiary institution
- Preference will be given to those studying full-time and those studying Certificate III and above
- Students must have a residential connection with Bena, Loch, Nyora, Poowong or surrounding areas

Applications for the scholarships will be accepted from July 1st each year.

## **Greenhills Community Benevolent Society – Apprenticeship Scholarships**

Apprenticeship Scholarships for Residents of Bena, Loch, Nyora, Poowong and Surrounding Areas. Greenhills Community Benevolent Society Incorporated aims to encourage local residents to qualify in a trade.

Eligibility:

- Available to apprentices undertaking an apprenticeship in the current year
- Applicants must have a residential connection with Bena, Loch, Nyora, Poowong or surrounding areas

Apprenticeship scholarships will be accepted from July 1st each year.

## **Saputo Dairy Australia – Supplier Scholarship Program**

The Supplier Scholarship Program is an initiative by Saputo Dairy Australia (SDA) supporting the future leaders of the dairy industry.

Eligibility:

- Current farmer suppliers and their children who are;
- Enrolled or planning to enrol in the 2026 academic year
- Enrolled or planning to enrol in an eligible course of study at an accredited higher education establishment within Australia, with the intention of pursuing a career through your chosen course that will directly benefit the dairy industry.

Eligibility of courses will be determined by Saputo Dairy Australia on a case-by-case basis at its sole discretion. Preference is given to candidates studying in the fields of Agriculture, Animal Health and Handling, Veterinarian Science, Food Science, Nutrition, Commerce, Management or Communications.

# Regional, Rural or Remote Scholarships

## **Youthrive Victoria (University Scholarships)**

Youthrive Victoria provides scholarships to Year 12 students with leadership potential who plan to attend university the following year.

Note: each rural/regional school can endorse a maximum of three applicants.

Selection criteria include:

- Leadership capacity or potential
- Financial need
- Desire to return to rural Victoria after graduation
- Community service
- Academic ability.



## **Youthrive Victoria (Rural Chances Vocational Scholarships)**

Rural Chances scholarships are for young rural Victorians facing significant financial or social challenges, and those who want to, or who are studying at TAFE or undertaking an apprenticeship.

You can apply online and will need to submit either a written or video application.

Eligibility criteria:

- 16–24 years of age
- Centrelink health care card, or evidence of significant financial hardship
- Identify a TAFE qualification (Certificate III or above) they would like to enrol in or are enrolled in, OR an apprenticeship they would like to undertake
- Planning to train in an area where there are skills shortages in rural/regional Victoria
- Willing to have a mentor supporting their learning
- Willing to be accountable for the use of scholarship funds
- Willing to participate in publicity/promotional material and research



# Centrelink Scholarships & Assistance

## **Tertiary Access Payment (TAP)**

The Tertiary Access Payment (TAP) is a one-off payment of up to \$5,000. It's to help eligible students with the cost of moving to study. To get the payment you need to meet some rules. These include:

- Moving from a regional or remote area for tertiary study. You can check if your family home is in a regional or remote area using the [Student Regional Area Search](#).
- Moving to study at a tertiary education provider that's at least 90 minutes away from your family home location by public transport
- Starting tertiary study in the year after finishing year 12 or equivalent.
- An Australian resident
- Studying a tertiary course at certificate IV or above in the 12 months immediately after completing year 12
- Aged 22 years or younger on the day you start your tertiary course
- Parents or guardians whose income is under the current combined parental income limit of \$250,000.

\*Note: You can only claim this payment in your first year of tertiary study.

## **Relocation Scholarship**

You might get a Relocation Scholarship if you're a student getting Youth Allowance or ABSTUDY and you meet these rules:

- Are a dependent student or an independent student for a special reason
- Study in a specific place that requires you to relocate
- Meet the study rules
- Get at least \$1 of Youth Allowance as a student or ABSTUDY Living Allowance.

## **Student Start-up Loan**

The Student Start-up Loan is a voluntary \$1,201 loan for eligible students who get Youth Allowance, Austudy or ABSTUDY Living Allowance. You can get the loan up to twice a year, once each loan period.

Loans are tax free and you don't need to declare them to us as income for your regular student payment.



You have to pay back the loan once you start earning a certain amount of income. You should think about how this will impact you in the long term before you apply.



# Scholarships by Study Area

---

## Agriculture & Environment

### **AgriFutures Australia**

The AgriFutures Horizon Scholarship is an initiative supporting students enrolled in full-time study at an Australian university by providing a bursary of \$5000 per year for the final 2 years of your degree plus many other benefits.

### **Career Harvest**

The Career Harvest website lists a range of scholarships from all over Australia, including graduate, postgraduate and vocational scholarships.

### **Agriculture Victoria – Young Farmers Scholarships**

To be eligible for the scholarship you must:

- Be aged 35 years or under at the time of the application close date
- Be working in a food and fibre farm business in Victoria at least three days per week for the past three months
- Have at least two years of total experience on-farm
- Be an Australian citizen or permanent resident currently residing in Victoria.

### **Gardiner Dairy Foundation Scholarships**

The Gardiner Foundation offers tertiary scholarships to up to seven individuals residing in Victorian dairy communities. Students must be commencing studies in 2026 to pursue a career that will either directly benefit the dairy industry and/or benefit dairy communities. Each scholarship is worth \$10,000 per year and is available for the first three years of a scholar's University or TAFE course.





# Building & Construction

## **Building and Construction Foundation Scholarships**

The Foundation provides financial assistance to individuals through three scholarships. Applications are received on a rolling basis (no deadlines).

(1) Early Career; (2) Career Advancement; and (3) Leadership scholarships.

Early Career Scholarship – \$2,200

This scholarship is best for those new to the industry. It is available to you if you would like to undertake a pre-apprenticeship, apprenticeship or other construction-related training. The funds are split into two:

- \$1,200 towards approved course fees, plus
- \$1,000 towards quality tools relevant to your trade

Previous successful applicants have used these funds towards an array of qualifications including Certificate II in Electrotechnology, Certificate III in Carpentry and Level 1 and 2 AutoCAD training.

---

# Business & Management

## **Real Insurance – Real Futures Grant**

To be eligible, you must be enrolled full-time in an accredited Australian Tertiary Education Institution and be studying for a certificate, diploma, degree or traineeship in any of the following areas:

Business	Including any business-related courses from any institution.
Finance	Including actuarial, statistics, accounting and general finance courses.

## **Chartered Accountants Australia & New Zealand**

Chartered Accountants Australia and New Zealand offers a variety of scholarships to students currently at university or who are committed to the CA Program. These scholarships offer financial support to candidates to help them succeed in their accounting career.

# Creative Arts

## **Australian Council for the Arts**

The Australian Council for the Arts offers a range of scholarships in the creative arts.

---

# Health, Nursing, Medicine

## **Rural Pharmacy Scholarship**

The Rural Pharmacy Scholarship Scheme provides support to those students living in remote and rural areas. The scholarship gives the opportunity for students to complete undergraduate or postgraduate studies.

Eligibility:

- You must be an Australian citizen
- You need to be enrolled or accepted for enrolment in an Australian university as a full-time student and be studying an undergraduate or graduate degree that leads to a registrable qualification as a pharmacist
- You have lived in a rural or remote area for at least five consecutive years or eight years total since the age of five.
- You need to be a member of (or be intending to join) your university's student Rural Health Club and be able to prove evidence of enrolment.



## **Australian Rotary Health**

Australian Rotary Health provides scholarships for Rural Nursing, Rural Medicine, and Indigenous Health.

**Rural Medical Scholarships** – ARH uses its rural medical scholarship program to create incentive for students to undertake at least one year of work placement in rural Australian communities. Each annual scholarship is worth \$5,000.

**Rural Nursing Scholarships** – ARH uses its rural nursing scholarship programs to create incentive for students to undertake their final year of clinical placement in rural Australian communities. Each annual scholarship is worth \$12,500.

**Indigenous Health Scholarship** – These yearly scholarships are awarded to Indigenous tertiary students as a way to support the barriers of tertiary study and qualification in Australian Indigenous populations. Each scholarship is worth \$5,000 per year.

## **Australian College of Nursing (ACN)**

ACN are proud to administer a range of Australian Government Department of Health and Aged Care scholarships for undergraduate and postgraduate aged care, nursing and midwifery courses. Additionally, the Puggy Hunter First Nations health scholarship targets Aboriginal and Torres Strait Islander students studying entry-level health courses.



## **Real Insurance – Real Futures Grant**

To be eligible, you must be enrolled full-time in an accredited Australian Tertiary Education Institution and be studying a certificate, diploma, degree or traineeship in any of the following areas:

Medicine	Including medical and health sciences, surgery and medical research.
Healthcare	Including health and fitness-related specialties, sport sciences, health services assistance and international health.
Specialist Healthcare	Including nursing, optometry, dentistry and pharmacy.

## **Australian Nurses Memorial Centre**

Australian Nurses Memorial Centre (ANMC) offers a range of scholarships for nurses and midwives undertaking postgraduate study.

Eligibility:

- Study must be by course work or research and must be at an Australian university or other accredited higher education institution
- Must be able to demonstrate satisfactory academic progress
- Must acknowledge the ANMC when presenting at conferences, or in media reports and publications related to study or research.

## **Royal Flying Doctors Service (RFDS) – Give Them Wings Scholarships**

RFDS Victoria offers rural students support through the Give Them Wings scholarship program.

To be eligible, students must:

- Be an Australian citizen or permanent resident
- Be studying full time at a Victorian university campus
- Current reside in, or have grown up in, regional, rural or remote Victoria.

Additionally, eligible students must be enrolled in nursing or an Allied Health discipline. Eligible courses include, but are not limited to, Aboriginal health work, Dentistry and oral health, Medicine, Nursing and Midwifery, Optometry, Paramedics, Psychology and Mental Health fields, Social work and Speech pathology.



### **Australian Seniors Aged Care Grant**

To apply for the Australian Seniors Aged Care Futures Grant, entrants will need to write a long form description (maximum 650 words) on why you want to work in your selected industry and the difference you hope to make in your particular field of study.

Eligibility requirements:

- Must be enrolled full-time in an accredited Australian Tertiary Education Institution and be studying for a certificate, diploma, degree or traineeship in any of the following areas:
  - Aged Care
  - Aged Care Nursing
  - Dementia Care
  - Disability Care
  - Any other courses leading to similar careers as an aged carer
- Citizens or permanent residents of Australia can apply
- You must be 18 years of age or older to apply.

### **Indigenous Allied Health Australia**

Indigenous Allied Health Australia offers a range of scholarships and bursaries for indigenous students in various areas of health.

---

## **Languages & Humanities**

### **Walter Mangold Language Scholarships**

The Walter Mangold Language Scholarships are generous travel awards offered to students of contemporary languages currently attending a university in Victoria, who are nominated and approved for an exchange or study abroad program to continue their accredited language and cultural studies overseas for at least one semester (12 weeks minimum).

---

## **Law**

### **Law Council of Australia**

The Law Council of Australia lists various scholarships available to students. Visit their website to find out more.

### **Roberts Gray Lawyers Scholarship Program**

Roberts Gray Lawyers is offering an annual \$5,000 scholarship to an Australian Law student to support pursuit of excellence in Law. Consideration will be given to supporting students who are addressing disadvantage and/or overcoming adversity.

### **RSPCA Sybil Emslie Animal Law Scholarship**

The RSPCA Sybil Emslie Animal Law Scholarship is intended to celebrate Sybil Emslie's life-long commitment to the care and protection of animals by encouraging legal scholarship and practice dedicated to advancing animal welfare. The \$1,000 annual scholarship will be awarded to a law student or lawyer who has a strong academic record and a commitment to the practice of animal law through active and substantial engagement with animal law and animal protection organisations and initiatives.

---

## **Science, Mathematics & Engineering**

### **Westpac Young Technologists Scholarship**

To apply, students must have completed the appropriate level of education to gain university entrance within the last 2 years. Students must enrol in an approved STEM related degree at one of five partner universities. Partner institutions are: University of Wollongong, Queensland University of Technology, RMIT University, Murdoch University and Western Sydney University.

### **Women of STEM**

This scholarship will be offered to young women aged 18-20 who are studying a degree in a STEM related field. The purpose of this scholarship is to provide the chosen applicants with financial aid to be used for general living expenses, course expenses, textbooks, extracurricular or any additional education. The recipient must be actively enrolled and studying during the duration of the scholarship.

### **Federation University – Iberdrola Australia Scholarships**

The Iberdrola Australia Scholarships will be offered annually to eight students studying at the Federation University Gippsland campus. The objectives of the scholarships are to:

- Encourage female participation in STEM studies
- Encourage local talent to remain local
- Support First Nations student opportunities through tertiary pathways to careers
- Create opportunities for students to pursue studies that otherwise might not be available to them.



## **Defence Women in STEM**

The Defence Women in STEM Undergraduate Scholarships are aimed at encouraging high-performing women to continue their university study in Science, Technology, Engineering, and Mathematics (STEM) fields and improve the representation of women in the STEM workforce. These scholarships are sponsored by the Defence Science and Technology Group (DSTG).

## **RSPCA**

RSPCA Australia offers three scholarships to encourage students to take an active interest in animal welfare issues, to support animal welfare research that might not otherwise attract funding, and to promote the objectives of the RSPCA within the research community.

## **CSIRO Scholarships**

The CSIRO Scholarship and postgraduate programs provide the future generation of scientists with the opportunity to launch their scientific careers working alongside leading scientists in world class facilities to deliver real world solutions. Opportunities include an annual vacation scholarship program (advertised in July) for undergraduates and a variety of postgraduate scholarships.



# Education

## **Department of Education**

The Commonwealth Teaching Scholarships provide the opportunity for students to receive:

- Up to \$40,000 per student for full-time *undergraduate* students
- Up to \$20,000 per student for full-time *postgraduate* students

Note: successful applicants must sign a Scholarship Agreement to teach in a government school or early learning setting for a time equivalent to the length of your teaching degree.

## **Department of Education and Training Victoria**

The Early Childhood Scholarships and the Early Childhood Aboriginal Pathway scholarship initiatives are part of the Victorian Government's investment to bolster our kindergarten workforce. Scholarships can be used to pay for course fees, living costs while you study, or other costs associated with your education.

The Secondary Teaching Degrees Scholarships support students with the cost of studying and living. They are available to students enrolling in Victorian secondary school teaching degrees in 2025, with further payments if they work in Victorian government secondary or specialist school after graduation.

The Pre-service Teacher Placement Grants are also available for primary and secondary pre-service teachers (PST) undertaking placement in an eligible regional, remote or specialist Victorian government school.

---

## Other Scholarships

### **Commonwealth Prac Payment (CPP)**

The Commonwealth Prac Payment is due to start in July 2025. The CPP offers social work, nursing and teaching students support while they're undertaking mandatory placements. This program is run by the Commonwealth government. Keep an eye on their website for updates on application details.

### **Country Women's Association (CWA)**

The CWA offers educational grants which are open to all. These grants include five Post-Secondary and Post-Graduate Awards. Applications open in 2025. Keep an eye on their website for updates on application details.

## **Victorian Government Scholarships**

The Victorian Government offers a range of scholarships for school leavers planning to undertake tertiary studies.

### **Bendigo Bank**

Bendigo and Adelaide Bank are committed to supporting young Australians. Each year they award scholarships to first year tertiary students. You need to be studying at an Australian University, College or TAFE campus for the first time. Keep an eye on their website for applications for Bendigo and Adelaide Bank, Rural Bank, Bendigo Bank TAFE and Indigenous scholarships.

Bendigo Bank also offers Community Bank Scholarships for specific regions. You can search by postcode [here](#).

### **Australian Veterans' Children Assistance Trust (AVCAT)**

AVCAT offers scholarships for Australian residents who are children or grandchildren of ex-serving veterans. Applications open 18 August, so check the eligibility criteria below:

- Australian residency status
- Planning to enrol or enrolled in a tertiary course of study for one or more academic years at a university, TAFE or a registered training organisation in Australia
- Be studying or planning to study full-time, online or face-to-face
- If an applicant has received a Long Tan Bursary, they cannot be considered for another
- In receipt of, or eligible to receive, a means-tested Commonwealth Educational Benefit – Youth Allowance, ABSTUDY, Austudy or Veterans' Children Education Scheme (VCES)
- Be a child or a grandchild of an ex-serving veteran
- The veteran must be an Australian ex-serving veteran with operational service including eligible war service, war-like service and peacekeeping/peacemaking service OR 3 or more continuous years of full-time service as a member of the Australian Navy, Army or Air Force.

### **Graduate Women Victoria**

Graduate Women Victoria offers an annual program of scholarships and bursaries for women and non-binary/gender-diverse students enrolled in universities in Victoria.

Scholarships and bursaries are normally offered in five categories:

- Indigenous undergraduates
- Fourth Year Honours Arts
- Education – Masters degree
- Masters Coursework, Masters Extended and Masters Research students
- PhD and Doctoral degree students.

## **RMHC Charlie Bell Scholarships**

A serious illness or injury can make life stand still. Making any progress can feel almost impossible. That's why the Charlie Bell Scholarship program exists. One-off grants of up to \$5,000 are awarded to deserving young people, giving them the chance to get their schooling or career back on track.

Eligibility:

- You need to be between 15–20 years of age (permission from a parent or guardian is required for children under the age of 18)
- You need to have been treated at a Children's Hospital for serious illness or injury
- You must be eligible to attend a tertiary or vocational institution such as University, or TAFE.

## **Youth Off The Streets Scholarship**

Every year, over 20 young people from across Australia are awarded a Youth Off The Streets scholarship. These scholarships are for students who can demonstrate financial need.

Eligibility:

- Must be aged between aged 16 to 21 years
- Must be an Australian citizen or permanent resident of Australia or New Zealand
- Must have a clear need for financial assistance and be studying in Australia for the two-year period of the program.

## **The Francis Gregory Foundation**

The Francis Gregory Foundation was established in 2012 to provide financial support to children of primary producers to assist them to undertake university undergraduate education by reducing financial barriers. The Foundation will provide two scholarships of \$6,000 per annum (for the duration of the undergraduate degree) to students whose main family income is derived from primary production.

In order to be considered for a scholarship, a student must:

- Be an Australian citizen
- Be a registered VCE student and achieve a minimum ATAR score of 80
- Be a resident of Victoria in an FZ zone (as defined by Victorian Government Department of Planning and Community Development) and reside on the land producing the family income
- Be the child of parents who own and/or operate the property from which the main family income is derived. (Please note dependents of farm employees are not eligible for this scholarship)
- Have demonstrated financial hardship in relation to pursuing university study.

## **Australia Awards**

These awards provide opportunities for people from developing countries, particularly those countries located in the Indo-Pacific region, to undertake full-time undergraduate or postgraduate study at participating Australian Universities and Technical and Further Education (TAFE) institutions.

## **Society of the Catholic Apostolate**

The Pallottine Aboriginal Scholarship Trust provides scholarships to Aboriginal and Torres Strait Islander people who wish to undertake post-secondary studies. Successful applicants receive a grant to cover course fees, paid directly to their course provider.

---

## **Vision Australia**

### **Vision Australia Bursary**

Each year, Vision Australia awards Further Education Bursaries to a select number of students who are blind or have low vision. The bursaries provide adaptive technology to help the students fully participate and succeed in their chosen studies. Eligibility criteria apply.

---

## **Scholarship Search Engines**



**Education is the most powerful weapon which you can use to change the world.**  
– Nelson Mandela

### **Country Education Foundation of Victoria**

The Country Education Foundation of Victoria website has a search engine where you can search for scholarships based on your requirements.

### **Indigenous Pathways Portal**

The Indigenous Pathways Portal lists scholarship opportunities for Aboriginal and Torres Strait Islander students. Scholarships are easily filtered in the scholarship search section.

### **Good Universities Guide**

The Good Universities Guide website provides a comprehensive list of scholarships you can browse via their search engine.

# University & TAFE Scholarship Listings

These pages will give you scholarship information specific to each institution.

ACU	<a href="https://www.acu.edu.au/study-at-acu/fees-and-scholarships/find-a-scholarship">https://www.acu.edu.au/study-at-acu/fees-and-scholarships/find-a-scholarship</a>
Charles Sturt University	<a href="https://study.csu.edu.au/apply/scholarships-grants">https://study.csu.edu.au/apply/scholarships-grants</a>
Deakin University	<a href="https://www.deakin.edu.au/study/fees-and-scholarships/scholarships/find-a-scholarship">https://www.deakin.edu.au/study/fees-and-scholarships/scholarships/find-a-scholarship</a>
Federation University	<a href="https://federation.edu.au/current-students/starting-at-federation/scholarships">https://federation.edu.au/current-students/starting-at-federation/scholarships</a>
Latrobe University	<a href="https://www.latrobe.edu.au/study/scholarships">https://www.latrobe.edu.au/study/scholarships</a>
Monash University	<a href="https://www.monash.edu/study/fees-scholarships/scholarships">https://www.monash.edu/study/fees-scholarships/scholarships</a>
RMIT	<a href="https://www.rmit.edu.au/students/careers-opportunities/scholarships">https://www.rmit.edu.au/students/careers-opportunities/scholarships</a>
Swinburne University of Technology	<a href="https://www.swinburne.edu.au/study/options/scholarships/">https://www.swinburne.edu.au/study/options/scholarships/</a>
University of Melbourne	<a href="https://scholarships.unimelb.edu.au/">https://scholarships.unimelb.edu.au/</a>
Victoria University	<a href="https://www.vu.edu.au/study-at-vu/fees-scholarships/scholarships">https://www.vu.edu.au/study-at-vu/fees-scholarships/scholarships</a>



William Angliss Institute	<a href="https://www.angliss.edu.au/study-with-us/scholarships/">https://www.angliss.edu.au/study-with-us/scholarships/</a>
Chisholm	<a href="https://www.chisholm.edu.au/about-us/caroline-chisholm-education-foundation/scholarships">https://www.chisholm.edu.au/about-us/caroline-chisholm-education-foundation/scholarships</a>
Holmesglen	<a href="https://holmesglen.edu.au/Students/Fees/How-to-pay-for-your-course/Scholarships/">https://holmesglen.edu.au/Students/Fees/How-to-pay-for-your-course/Scholarships/</a>
Kangan Institute	<a href="https://www.kangan.edu.au/study-with-us/prospective-students/scholarships">https://www.kangan.edu.au/study-with-us/prospective-students/scholarships</a>
Melbourne Polytechnic	<a href="https://www.melbournepolytechnic.edu.au/students/scholarships/search-for-a-scholarship/?">https://www.melbournepolytechnic.edu.au/students/scholarships/search-for-a-scholarship/?</a>
TAFE Gippsland	<a href="https://www.tafegippsland.edu.au/study_with_us/scholarships">https://www.tafegippsland.edu.au/study_with_us/scholarships</a>

### Do you know about the Saver Plus program?

Join Australia's longest running financial education and matched savings program. Build financial skills, develop life-long savings habits, and receive up to \$500 to assist with education costs. It involves a 10-month savings program that provides financial education to help build essential skills for managing money and becoming a regular saver. Upon completion, ANZ will match your savings, up to \$500, for education-related costs for you.



**Are you planning on studying at uni next year, and want to stay close to home?**

**We're here for you!**

**You can continue your education without leaving the region. CUC Bass Coast can provide you with everything you need to succeed at university.**

- FREE to register
- Dedicated study spaces
- Dual screen computers
- Fast, reliable internet
- Free academic assistance
- Open 7 days from 5am to 12am



Chat to one of the staff at CUC Bass Coast to find out how we can help you achieve your educational goals



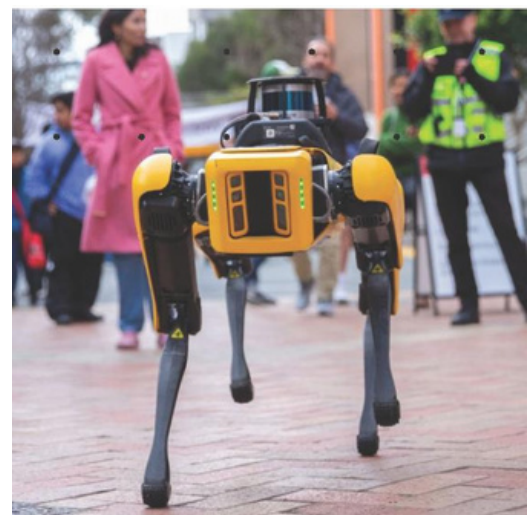
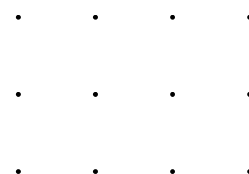
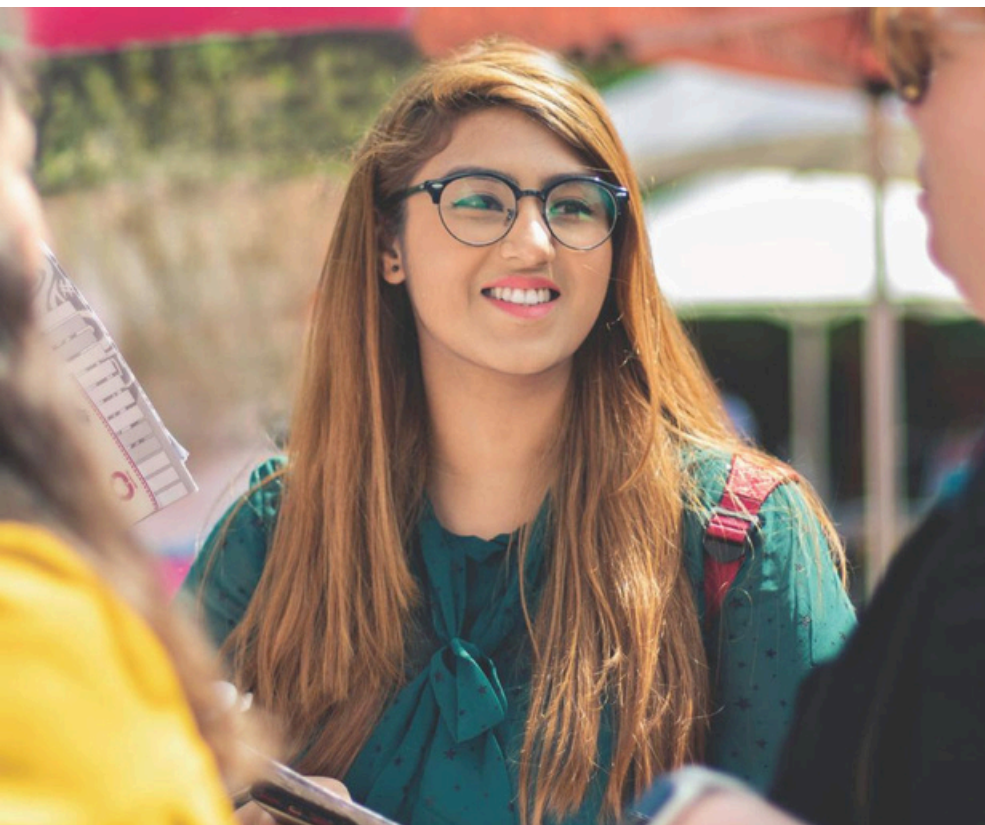


**"Our mission is to support students to succeed, widen access to higher education for regional, rural, and remote communities; and to change higher education to better fit regional Australia."**

**CHRIS RONAN**

CUC Chief Executive Officer





# Swinburne Open Day 2025

You're invited!

Join us at Open Day and explore your future through hands-on experiences, and the latest in skills, innovation and technology at Swinburne.

Bass Coast CUC partner school students and their families will be warmly welcomed upon arrival at the **Regional and Access Lounge** and receive:

- Free bus transport to and from Swinburne
- Personalised Open Day support from current Swinburne Student mentors
- A lunch voucher to use at cafes on campus

*"I really liked the day - especially the tour of residences and how welcome the student ambassadors made us feel. I've never been sure about going away to university, as moving away from home feels daunting, but the campus had a great vibe and made me think it could be somewhere I'd like to study (and maybe live) one day."*

-Year 12 Student

**Event Date:** Sunday 27 July 2025

**Time:** 10am to 4pm

**Location:** Swinburne University of Technology's Hawthorn Campus  
John St, Hawthorn, VIC 3122

**How to get here:** Swinburne will be covering the cost of buses to and from the event, departing from

TBC (Wonthaggi)

Register here,  
scan the QR code.



**Further information, email:**  
schoolprograms@swin.edu.au



